

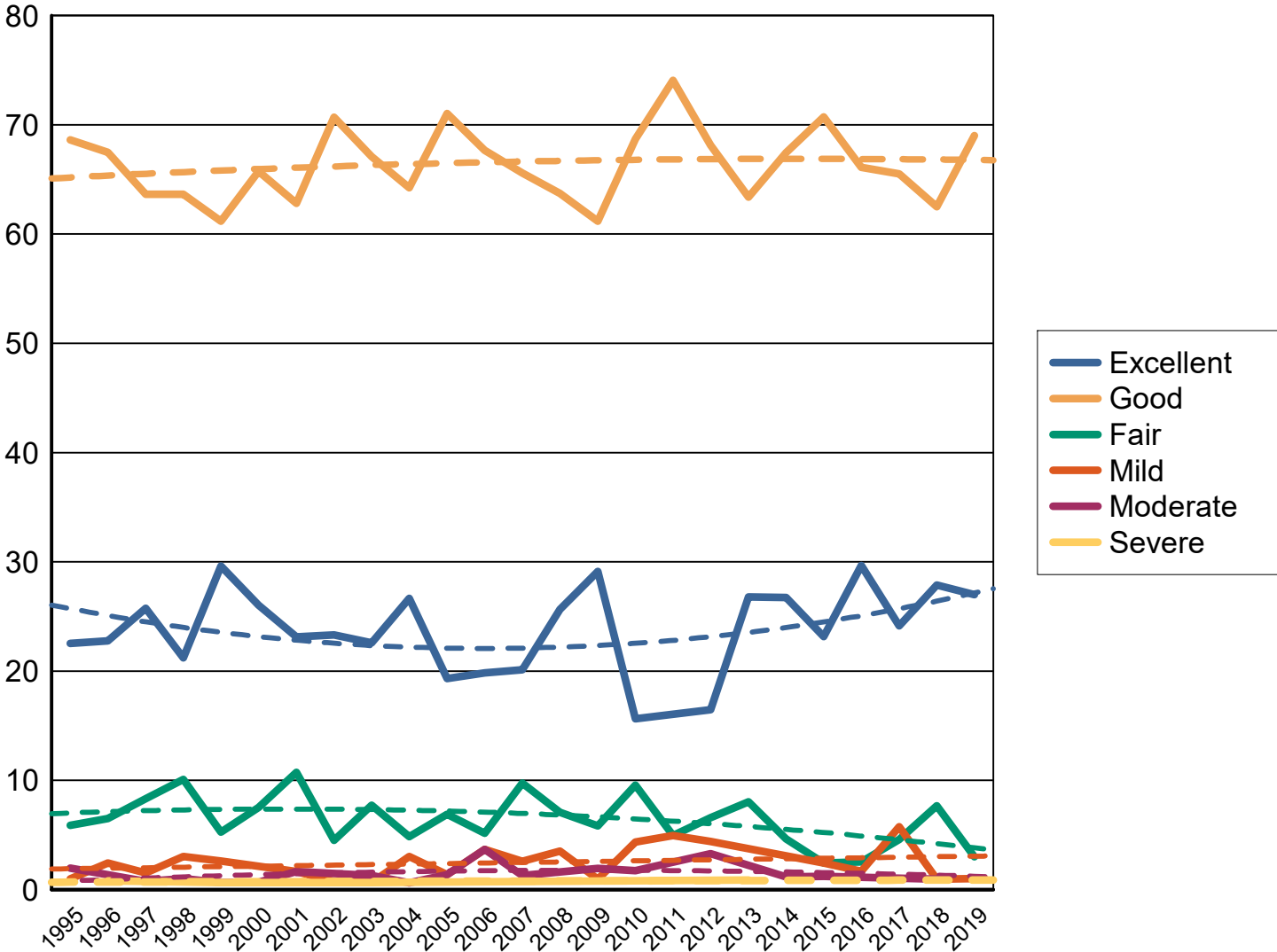
All data as of 12-31-2020

Dysplastic rank, all breeds with more than 100 cases

		Normals		Equivocal or Carrier		Abnormal	
Hips	177 of 198	3458	96.22%	11	0.31%	125	3.48%
Elbow	90 of 139	679	96.86%	2	0.29%	20	2.85%
Congenital Cardiac		82	100.00%	0		0	
Thyroid		702	86.99%	70	8.67%	35	4.34%
Degenerative Myelopathy		13	100.00%	0		0	
Patella		544	99.09%	0		5	0.91%
Progressive Retinal Atrophy		1938	73.49%	651	24.69%	48	1.82%
Fanconi Syndrome		6348	62.82%	3422	33.86%	335	3.32%
Primary Lens Luxation		1	100.00%	0		0	
Shoulder		4	100.00%	0		0	
Spinocerebellar Ataxia		18	100.00%	0		0	
OFA EYE Registry		788	95.98%	0		33	4.02%
Int'L Ophthalmological Exam		1	100.00%	0		0	
Dentition Database		14	87.50%	0		2	12.50%
Advanced Cardiac		9	90.00%	1	10.00%	0	
Kidney		1	100.00%	0		0	
Pyruvate Kinase Deficiency		158	99.37%	1	0.63%	0	

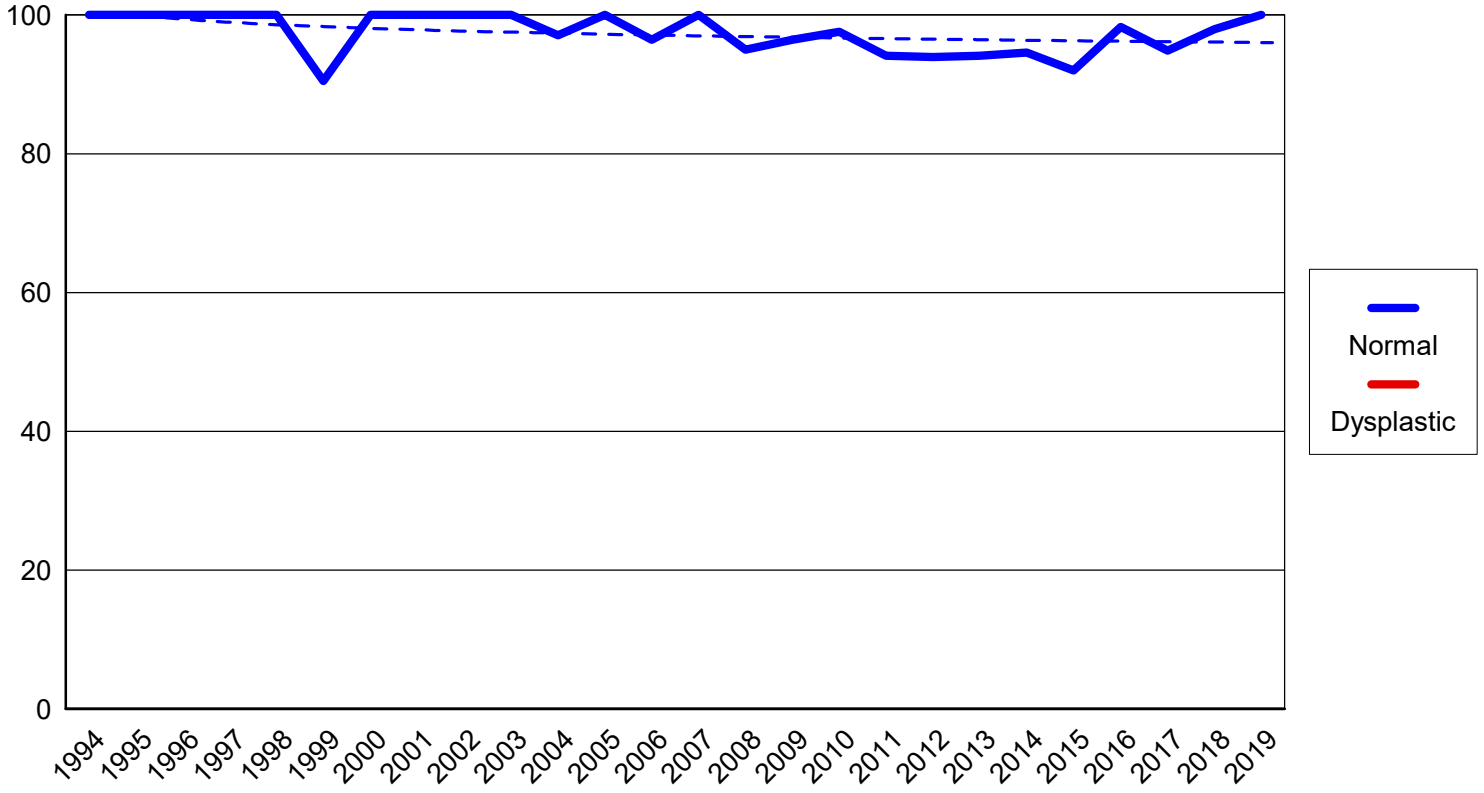
BASENJI

Hip percentages by rating with trendlines



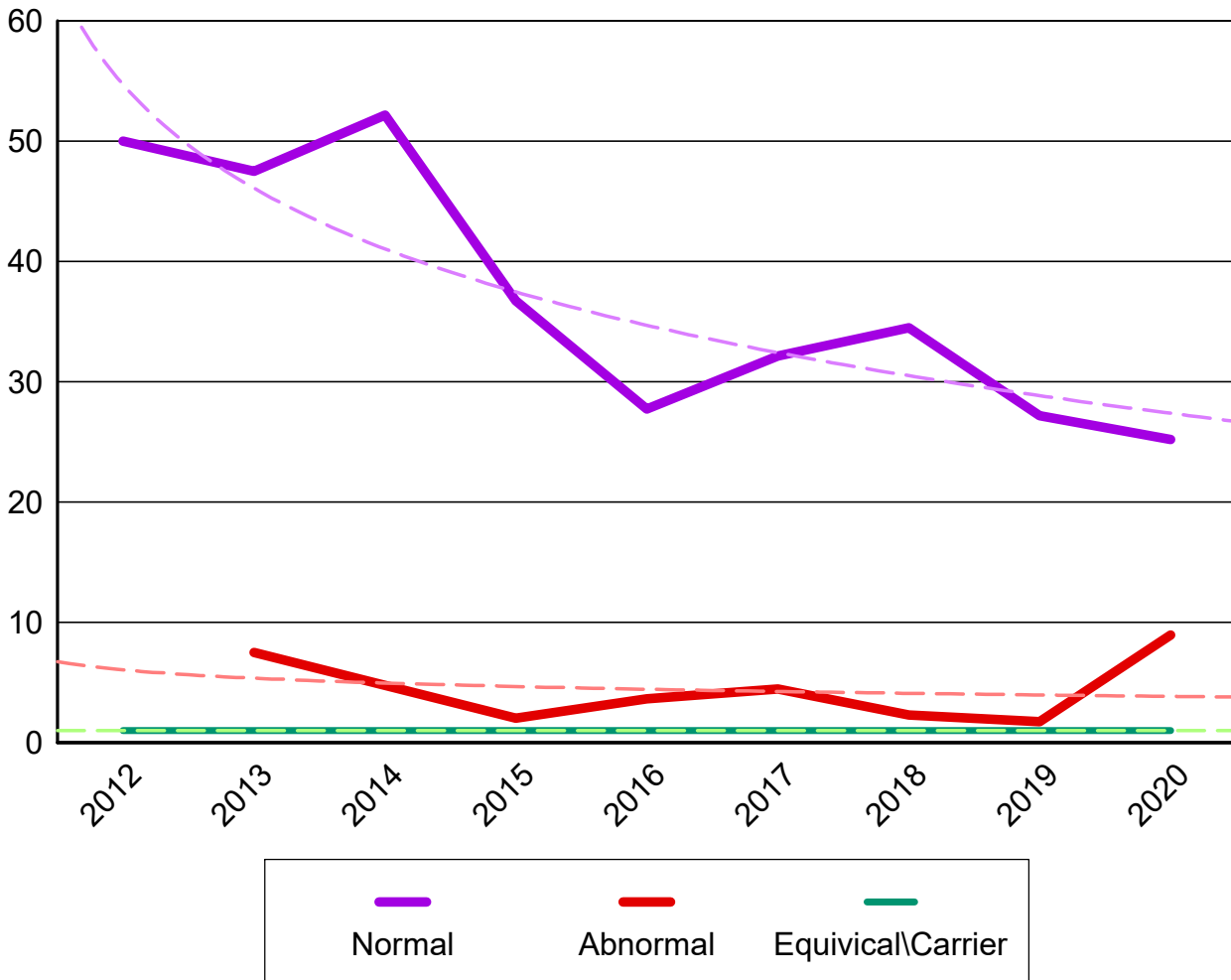
BASENJI

Elbow percentages by rating with trendlines



EYES

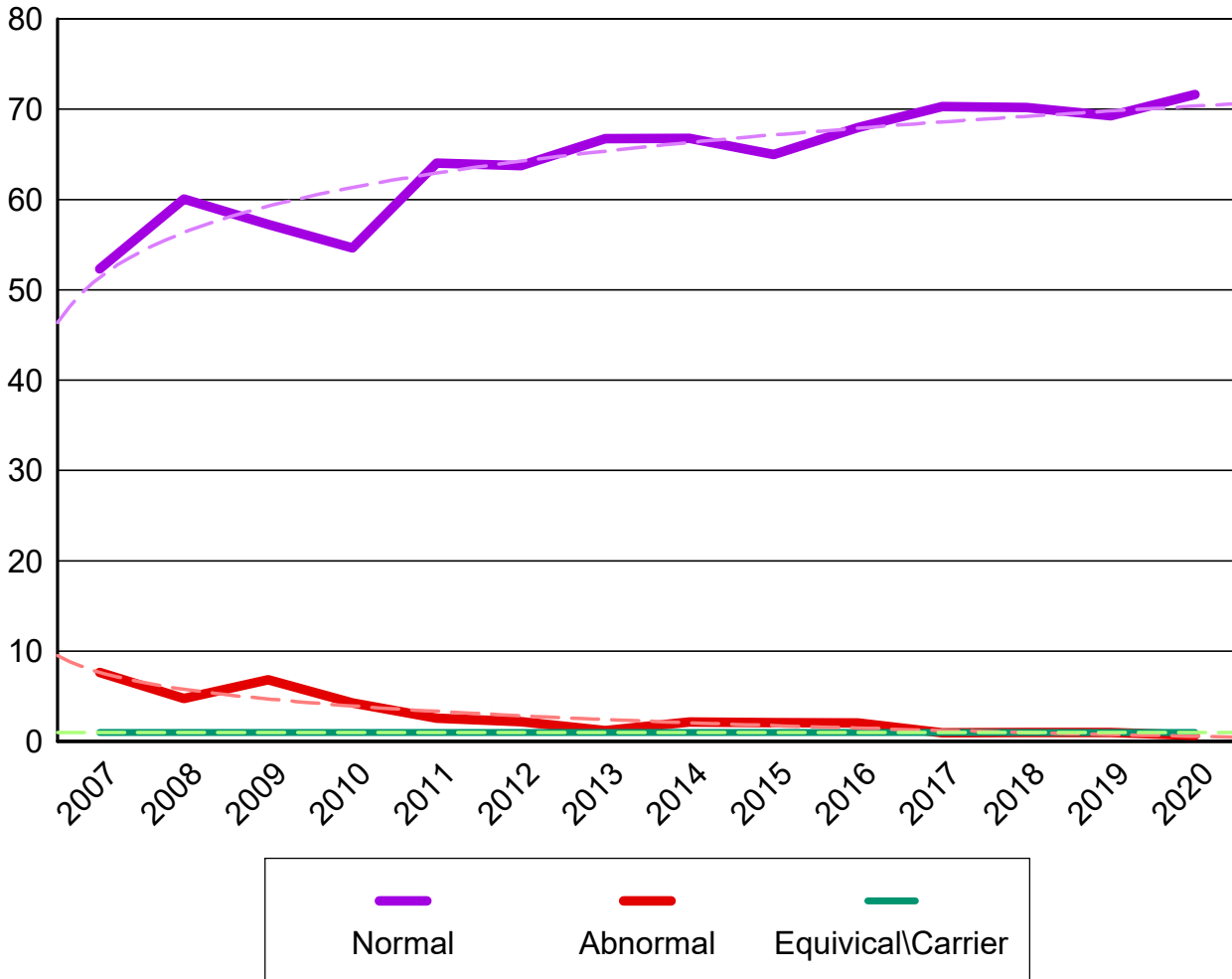
BASENJI



BASENJI

FANCONI SYNDROME

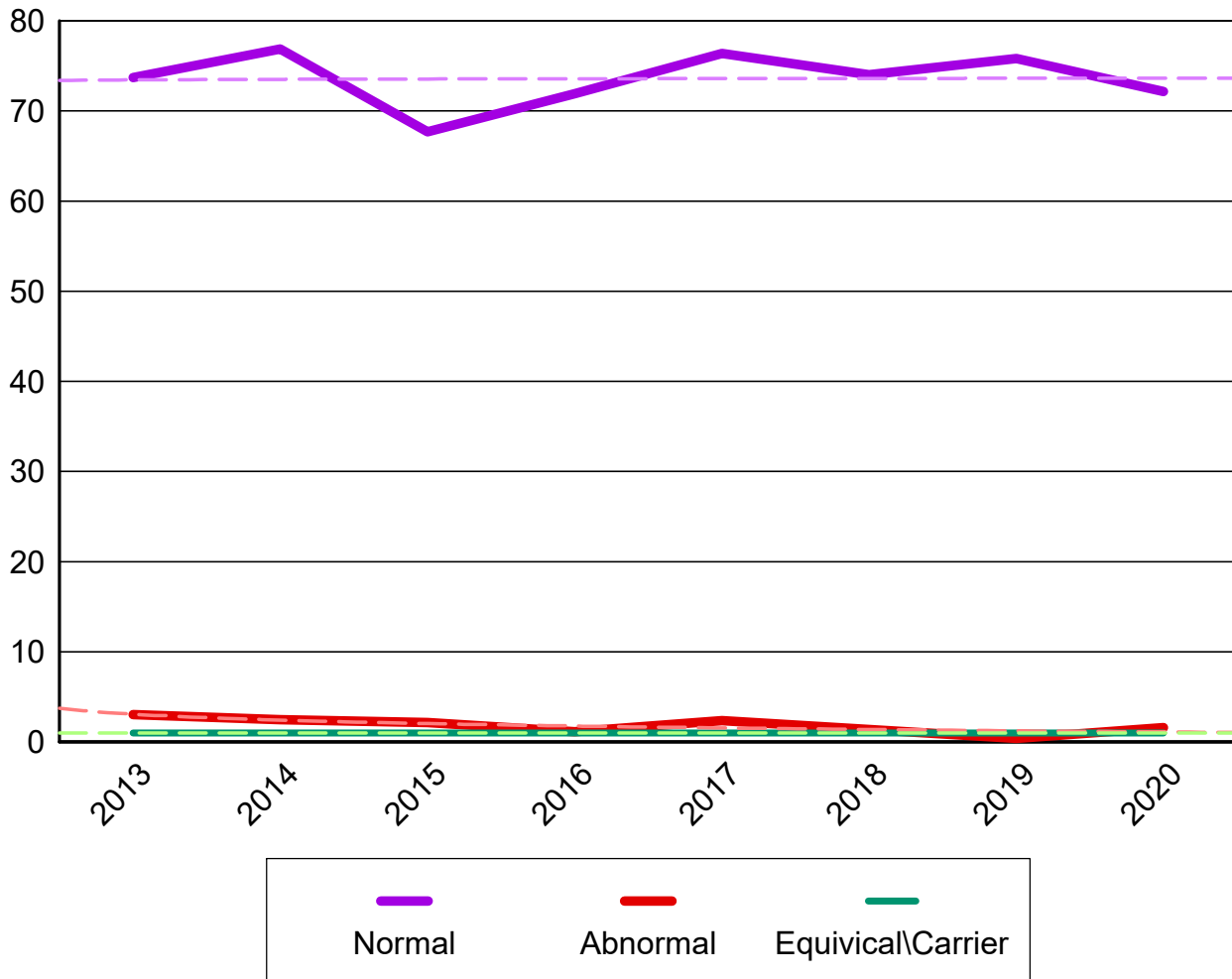
BASENJI



BASENJI

PROGRESSIVE RETINAL ATROPHY

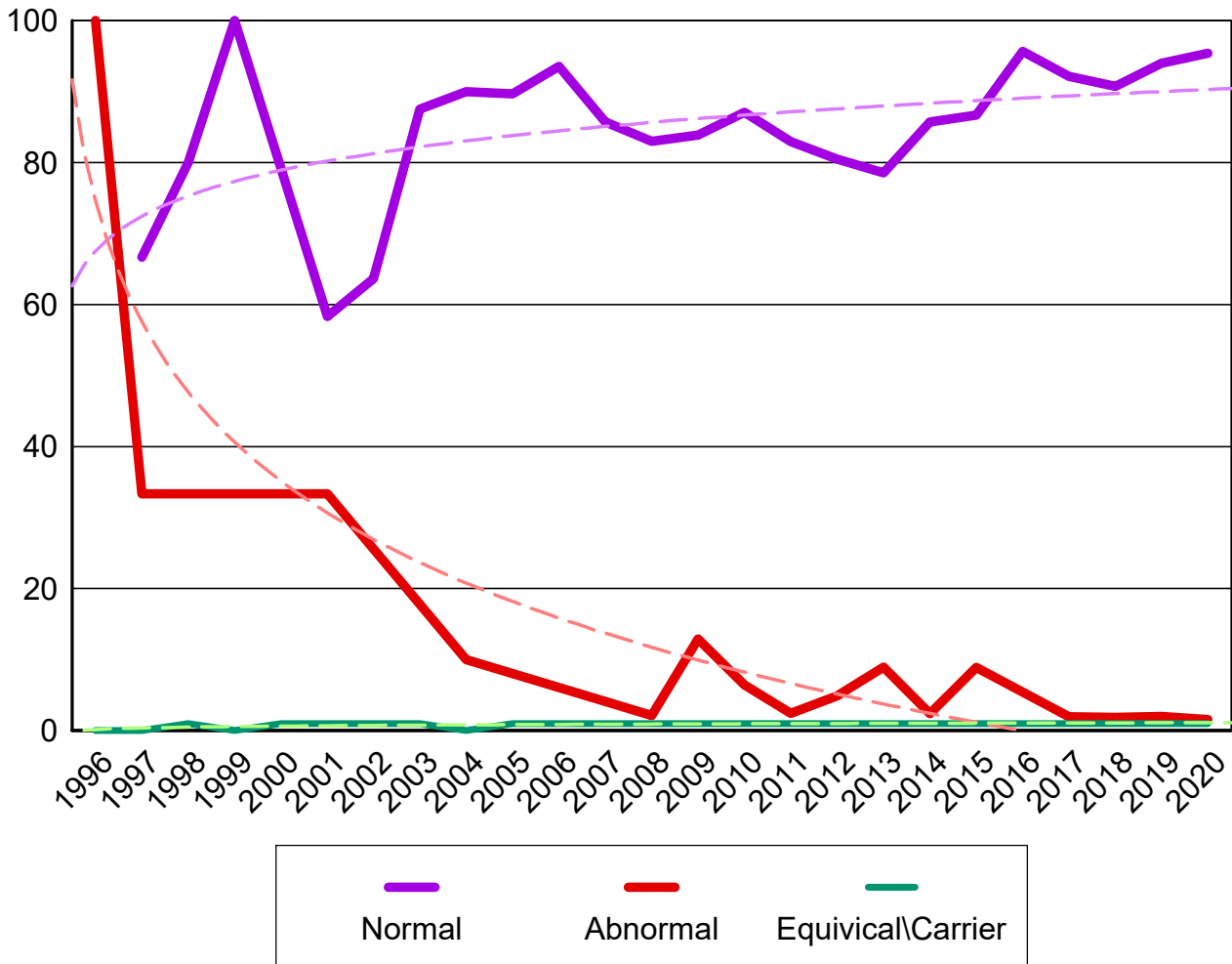
BASENJI



BASENJI

THYROID

BASENJI



**Percent submitted to the open registry**

**Hips**

Report year	Cases	Excellent %	Good %	Fair %	Borderline %	Mild %	Moderate %	Severe %
1976	2	1 50.00%	1 50.00%	0	0	0	0	0
1977	2	1 50.00%	1 50.00%	0	0	0	0	0
1989	2	2 100.00%	0	0	0	0	0	0
1991	3	0	3 100.00%	0	0	0	0	0
1992	61	10 16.39%	45 73.77%	2 3.28%	0	1 1.64%	3 4.92%	0
1993	118	28 23.73%	80 67.80%	6 5.08%	0	3 2.54%	0	1 0.85%
1994	81	20 24.69%	54 66.67%	6 7.41%	0	1 1.23%	0	0
1995	102	23 22.55%	70 68.63%	6 5.88%	0	1 0.98%	2 1.96%	0
1996	123	28 22.76%	83 67.48%	8 6.50%	0	3 2.44%	0	1 0.81%
1997	132	34 25.76%	84 63.64%	11 8.33%	0	2 1.52%	1 0.76%	0
1998	99	21 21.21%	63 63.64%	10 10.10%	1 1.01%	3 3.03%	1 1.01%	0
1999	152	45 29.61%	93 61.18%	8 5.26%	0	4 2.63%	1 0.66%	1 0.66%
2000	146	38 26.03%	96 65.75%	11 7.53%	0	0	1 0.68%	0
2001	121	28 23.14%	76 62.81%	13 10.74%	0	2 1.65%	2 1.65%	0
		<b>14.88%</b>						
2002	133	31 23.31%	94 70.68%	6 4.51%	1 0.75%	1 0.75%	0	0
		<b>32.33%</b>						
2003	155	35 22.58%	104 67.10%	12 7.74%	0	1 0.65%	2 1.29%	1 0.65%
		<b>29.68%</b>						
2004	165	44 26.67%	106 64.24%	8 4.85%	1 0.61%	5 3.03%	1 0.61%	0
		<b>32.73%</b>						
2005	145	28 19.31%	103 71.03%	10 6.90%	0	2 1.38%	2 1.38%	0
		<b>44.14%</b>						
2006	136	27 19.85%	92 67.65%	7 5.15%	0	5 3.68%	5 3.68%	0
		<b>27.94%</b>						
2007	154	31 20.13%	101 65.58%	15 9.74%	1 0.65%	4 2.60%	2 1.30%	0
		<b>44.81%</b>						
2008	113	29 25.66%	72 63.72%	8 7.08%	0	4 3.54%	0	0
		<b>53.98%</b>						
2009	103	30 29.13%	63 61.17%	6 5.83%	1 0.97%	1 0.97%	2 1.94%	0
		<b>39.81%</b>						



**Percent submitted to the open registry**

**Hips**

Report year	Cases	Excellent %	Good %	Fair %	Borderline %	Mild %	Moderate %	Severe %
2010	115	18	79	11	0	5	2	0
	<b>51.30%</b>	15.65%	68.70%	9.57%		4.35%	1.74%	
2011	81	13	60	4	0	4	0	0
	<b>41.98%</b>	16.05%	74.07%	4.94%		4.94%		
2012	91	15	62	6	1	4	3	0
	<b>39.56%</b>	16.48%	68.13%	6.59%	1.10%	4.40%	3.30%	
2013	112	30	71	9	1	0	0	1
	<b>31.25%</b>	26.79%	63.39%	8.04%	0.89%			0.89%
2014	86	23	58	4	0	0	1	0
	<b>23.26%</b>	26.74%	67.44%	4.65%			1.16%	
2015	82	19	58	2	0	2	1	0
	<b>39.02%</b>	23.17%	70.73%	2.44%		2.44%	1.22%	
2016	118	35	78	3	0	2	0	0
	<b>50.85%</b>	29.66%	66.10%	2.54%		1.69%		
2017	87	21	57	4	0	5	0	0
	<b>41.38%</b>	24.14%	65.52%	4.60%		5.75%		
2018	104	29	65	8	0	1	1	0
	<b>46.15%</b>	27.88%	62.50%	7.69%		0.96%	0.96%	
2019	100	27	69	3	0	1	0	0
	<b>48.00%</b>	27.00%	69.00%	3.00%		1.00%		
2020	103	28	66	7	0	2	0	0
	<b>55.34%</b>	27.18%	64.08%	6.80%		1.94%		
<b>Totals</b>	<b>3,331</b>	<b>792</b>	<b>2,210</b>	<b>214</b>	<b>7</b>	<b>70</b>	<b>33</b>	<b>5</b>
		<b>23.78%</b>	<b>66.35%</b>	<b>6.42%</b>	<b>0.21%</b>	<b>2.10%</b>	<b>0.99%</b>	<b>0.15%</b>

**Elbow**

<i>Report Year</i>	<i>Cases</i>	<i>Normal %</i>	<i>Grade 1 %</i>	<i>Grade 2 %</i>	<i>Grade 3 %</i>	<i>Borderline %</i>
1992	2	2 100.00%				
1993	1	1 100.00%				
1994	2	2 100.00%				
1995	1	1 100.00%				
1996	2	2 100.00%				
1997	3	3 100.00%				
1998	5	5 100.00%				
1999	21	19 90.48%	2 9.52%			
2000	8	8 100.00%				
2001	8	8 100.00%				
2002	12	12 100.00%				
2003	23	23 100.00%				
2004	34	33 97.06%	1 2.94%			
2005	16	16 100.00%				
2006	28	27 96.43%	1 3.57%			
2007	36	36 100.00%				
2008	20	19 95.00%	1 5.00%			
2009	28	27 96.43%	1 3.57%			
2010	41	40 97.56%	1 2.44%			
2011	17	16 94.12%	1 5.88%			
2012	33	31 93.94%	2 6.06%			

**Elbow**

<i>Report Year</i>	<i>Cases</i>	<i>Normal</i> <i>%</i>	<i>Grade 1</i> <i>%</i>	<i>Grade 2</i> <i>%</i>	<i>Grade 3</i> <i>%</i>	<i>Borderline</i> <i>%</i>
2013	34	32 94.12%	2 5.88%			
2014	37	35 94.59%	1 2.70%			1 2.70%
2015	25	23 92.00%	2 8.00%			
2016	58	57 98.28%	1 1.72%			
2017	39	37 94.87%	1 2.56%			1 2.56%
2018	49	48 97.96%	1 2.04%			
2019	38	38 100.00%				
2020	45	43 95.56%	2 4.44%			
<b>Totals</b>	<b>666</b>	<b>644</b> <b>96.70%</b>	<b>20</b> <b>3.00%</b>			<b>2</b> <b>0.30%</b>

**Advanced Cardiac**

<i>Report year</i>	<i>Cases</i>	<i>Normal</i>	<i>% Normal</i>	<i>Abnormal</i>	<i>% Abnormal</i>	<i>Carrier</i>	<i>% Carrier</i>
<b>Basenji</b>							
2017	2	2	100.0				
2018	4	3	75.0			1	25.0
2019	2	2	100.0				
2020	2	2	100.0				
<b>Totals</b>	<b>10</b>	<b>9</b>	<b>90.0</b>			<b>1</b>	<b>10.0</b>

**Congenital Cardiac**

<i>Report year</i>	<i>Cases</i>	<i>Normal</i>	<i>% Normal</i>	<i>Abnormal</i>	<i>% Abnormal</i>	<i>Equivocal</i>	<i>% Equivocal</i>
<b>Basenji</b>							
1997	1	1	100.0				
2000	1	1	100.0				
2002	3	3	100.0				
2003	8	8	100.0				
2004	3	3	100.0				
2005	1	1	100.0				
2006	4	4	100.0				
2007	17	17	100.0				
2008	3	3	100.0				
2009	11	11	100.0				
2010	4	4	100.0				
2011	1	1	100.0				
2012	5	5	100.0				
2013	1	1	100.0				
2014	2	2	100.0				
2015	2	2	100.0				
2016	3	3	100.0				
2017	2	2	100.0				
2019	4	4	100.0				
2020	5	5	100.0				
<b>Totals</b>	<b>81</b>	<b>81</b>	<b>100.0</b>				

**Degenerative Myelopathy**

<i>Report year</i>	<i>Cases</i>	<i>Normal</i>	<i>% Normal</i>	<i>Abnormal</i>	<i>% Abnormal</i>	<i>Carrier</i>	<i>% Carrier</i>
<b>Basenji</b>							
2012	3	3	100.0				
2013	1	1	100.0				
2014	1	1	100.0				
2015	1	1	100.0				
2017	3	3	100.0				
2018	3	3	100.0				
2020	1	1	100.0				
<b>Totals</b>	<b>13</b>	<b>13</b>	<b>100.0</b>				

### Dentition Database

<i>Report year</i>	<i>Cases</i>	<i>Normal</i>	<i>% Normal</i>	<i>Abnormal</i>	<i>% Abnormal</i>	<i>Carrier</i>	<i>% Carrier</i>
<b>Basenji</b>							
2014	4	3	75.0	1	25.0		
2015	3	2	66.7	1	33.3		
2016	1	1	100.0				
2017	4	4	100.0				
2019	2	2	100.0				
2020	2	2	100.0				
<b>Totals</b>	<b>16</b>	<b>14</b>	<b>87.5</b>	<b>2</b>	<b>12.5</b>		

### Eyes

<i>Report year</i>	<i>Cases</i>	<i>Normal</i>	<i>% Normal</i>	<i>Abnormal</i>	<i>% Abnormal</i>	<i>Breeder opt.</i>	<i>% Breeder opt.</i>
<b>Basenji</b>							
2012	2	1	50.0			1	50.0
2013	80	38	47.5	6	7.5	36	45.0
2014	69	36	52.2			33	47.8
2015	98	36	36.7	2	2.0	60	61.2
2016	137	38	27.7	5	3.7	94	68.6
2017	112	36	32.1	5	4.5	71	63.4
2018	87	30	34.5	2	2.3	55	63.2
2019	114	31	27.2	2	1.8	81	71.1
2020	123	31	25.2	11	8.9	81	65.9
<b>Totals</b>	<b>822</b>	<b>277</b>	<b>33.7</b>	<b>33</b>	<b>4.0</b>	<b>512</b>	<b>62.3</b>

### Fanconi Syndrome

<i>Report year</i>	<i>Cases</i>	<i>Normal</i>	<i>% Normal</i>	<i>Abnormal</i>	<i>% Abnormal</i>	<i>Carrier</i>	<i>% Carrier</i>
<b>Basenji</b>							
2007	1414	740	52.3	108	7.6	566	40.0
2008	776	466	60.1	37	4.8	273	35.2
2009	657	376	57.2	45	6.9	236	35.9
2010	677	370	54.7	29	4.3	278	41.1
2011	1004	643	64.0	26	2.6	335	33.4
2012	1054	672	63.8	23	2.2	359	34.1
2013	908	606	66.7	11	1.2	291	32.1
2014	650	434	66.8	14	2.2	202	31.1
2015	574	373	65.0	12	2.1	189	32.9
2016	634	431	68.0	13	2.1	190	30.0
2017	515	362	70.3	5	1.0	148	28.7
2018	406	285	70.2	4	1.0	117	28.8
2019	410	284	69.3	4	1.0	122	29.8
2020	448	321	71.7	3	0.7	124	27.7
<b>Totals</b>	<b>10127</b>	<b>6363</b>	<b>62.8</b>	<b>334</b>	<b>3.3</b>	<b>3430</b>	<b>33.9</b>

### Kidney

<i>Report year</i>	<i>Cases</i>	<i>Normal</i>	<i>% Normal</i>	<i>Abnormal</i>	<i>% Abnormal</i>	<i>Carrier</i>	<i>% Carrier</i>
--------------------	--------------	---------------	-----------------	-----------------	-------------------	----------------	------------------

### Kidney

<i>Report year</i>	<i>Cases</i>	<i>Normal</i>	<i>% Normal</i>	<i>Abnormal</i>	<i>% Abnormal</i>	<i>Carrier</i>	<i>% Carrier</i>
<b>Basenji</b>							
2020	1	1	100.0				
<b>Totals</b>	<b>1</b>	<b>1</b>	<b>100.0</b>				

### Patella

<i>Report year</i>	<i>Cases</i>	<i>Normal</i>	<i>% Normal</i>	<i>Abnormal</i>	<i>% Abnormal</i>	<i>Carrier</i>	<i>% Carrier</i>
<b>Basenji</b>							
1997	1	1	100.0				
2000	4	4	100.0				
2001	1	1	100.0				
2002	2	2	100.0				
2003	23	22	95.7	1	4.4		
2004	5	5	100.0				
2005	10	10	100.0				
2006	28	27	96.4	1	3.6		
2007	49	48	98.0	1	2.0		
2008	34	34	100.0				
2009	37	37	100.0				
2010	39	39	100.0				
2011	26	26	100.0				
2012	35	35	100.0				
2013	34	34	100.0				
2014	23	23	100.0				
2015	18	18	100.0				
2016	50	49	98.0	1	2.0		
2017	30	30	100.0				
2018	34	34	100.0				
2019	27	27	100.0				
2020	33	32	97.0	1	3.0		
<b>Totals</b>	<b>543</b>	<b>538</b>	<b>99.1</b>	<b>5</b>	<b>0.9</b>		

### Primary Lens Luxation

<i>Report year</i>	<i>Cases</i>	<i>Normal</i>	<i>% Normal</i>	<i>Abnormal</i>	<i>% Abnormal</i>	<i>Carrier</i>	<i>% Carrier</i>
<b>Basenji</b>							
2015	1	1	100.0				
<b>Totals</b>	<b>1</b>	<b>1</b>	<b>100.0</b>				

### Progressive Retinal Atrophy

<i>Report year</i>	<i>Cases</i>	<i>Normal</i>	<i>% Normal</i>	<i>Abnormal</i>	<i>% Abnormal</i>	<i>Carrier</i>	<i>% Carrier</i>
<b>Basenji</b>							
2013	460	339	73.7	14	3.0	107	23.3
2014	363	279	76.9	9	2.5	75	20.7
2015	322	218	67.7	7	2.2	97	30.1
2016	349	251	71.9	4	1.2	94	26.9

### Progressive Retinal Atrophy

<i>Report year</i>	<i>Cases</i>	<i>Normal</i>	<i>% Normal</i>	<i>Abnormal</i>	<i>% Abnormal</i>	<i>Carrier</i>	<i>% Carrier</i>
2017	339	259	76.4	8	2.4	72	21.2
2018	254	188	74.0			66	26.0
2019	244	185	75.8	1	0.4	58	23.8
2020	316	228	72.2	5	1.6	83	26.3
<b>Totals</b>	<b>2647</b>	<b>1947</b>	<b>73.6</b>	<b>48</b>	<b>1.8</b>	<b>652</b>	<b>24.6</b>

### Pyruvate Kinase Deficiency

<i>Report year</i>	<i>Cases</i>	<i>Normal</i>	<i>% Normal</i>	<i>Abnormal</i>	<i>% Abnormal</i>	<i>Carrier</i>	<i>% Carrier</i>
<b>Basenji</b>							
1998	2	2	100.0				
1999	10	10	100.0				
2000	16	16	100.0				
2001	8	8	100.0				
2002	42	42	100.0				
2003	8	8	100.0				
2004	9	9	100.0				
2005	6	5	83.3			1	16.7
2006	3	3	100.0				
2007	7	7	100.0				
2008	3	3	100.0				
2009	5	5	100.0				
2010	8	8	100.0				
2011	1	1	100.0				
2012	1	1	100.0				
2013	1	1	100.0				
2014	3	3	100.0				
2015	1	1	100.0				
2018	4	4	100.0				
2019	8	8	100.0				
2020	20	20	100.0				
<b>Totals</b>	<b>166</b>	<b>165</b>	<b>99.4</b>			<b>1</b>	<b>0.6</b>

### Shoulder

<i>Report year</i>	<i>Cases</i>	<i>Normal</i>	<i>% Normal</i>	<i>Abnormal</i>	<i>% Abnormal</i>		
<b>Basenji</b>							
2007	1	1	100.0				
2020	3	3	100.0				
<b>Totals</b>	<b>4</b>	<b>4</b>	<b>100.0</b>				

### Spinocerebellar Ataxia

<i>Report year</i>	<i>Cases</i>	<i>Normal</i>	<i>% Normal</i>	<i>Abnormal</i>	<i>% Abnormal</i>	<i>Carrier</i>	<i>% Carrier</i>
<b>Basenji</b>							
2019	8	8	100.0				
2020	17	17	100.0				

### Spinocerebellar Ataxia

<i>Report year</i>	<i>Cases</i>	<i>Normal</i>	<i>% Normal</i>	<i>Abnormal</i>	<i>% Abnormal</i>	<i>Carrier</i>	<i>% Carrier</i>
<b>Totals</b>	<b>25</b>	<b>25</b>	<b>100.0</b>				

### Thyroid

<i>Report year</i>	<i>Cases</i>	<i>Normal</i>	<i>% Normal</i>	<i>Abnormal</i>	<i>% Abnormal</i>	<i>Equivocal</i>	<i>% Equivocal</i>
<b>Basenji</b>							
1996	1			1	100.0		
1997	3	2	66.7	1	33.3		
1998	5	4	80.0			1	20.0
1999	1	1	100.0				
2000	3			1	33.3	2	66.7
2001	12	7	58.3	4	33.3	1	8.3
2002	11	7	63.6			4	36.4
2003	8	7	87.5			1	12.5
2004	20	18	90.0	2	10.0		
2005	29	26	89.7			3	10.3
2006	31	29	93.6			2	6.5
2007	49	42	85.7	2	4.1	5	10.2
2008	47	39	83.0	1	2.1	7	14.9
2009	31	26	83.9	4	12.9	1	3.2
2010	31	27	87.1	2	6.5	2	6.5
2011	41	34	82.9	1	2.4	6	14.6
2012	41	33	80.5	2	4.9	6	14.6
2013	56	44	78.6	5	8.9	7	12.5
2014	42	36	85.7	1	2.4	5	11.9
2015	45	39	86.7	4	8.9	2	4.4
2016	69	66	95.7			3	4.4
2017	51	47	92.2	1	2.0	3	5.9
2018	54	49	90.7	1	1.9	4	7.4
2019	50	47	94.0	1	2.0	2	4.0
2020	65	62	95.4	1	1.5	2	3.1
<b>Totals</b>	<b>796</b>	<b>692</b>	<b>86.9</b>	<b>35</b>	<b>4.4</b>	<b>69</b>	<b>8.7</b>